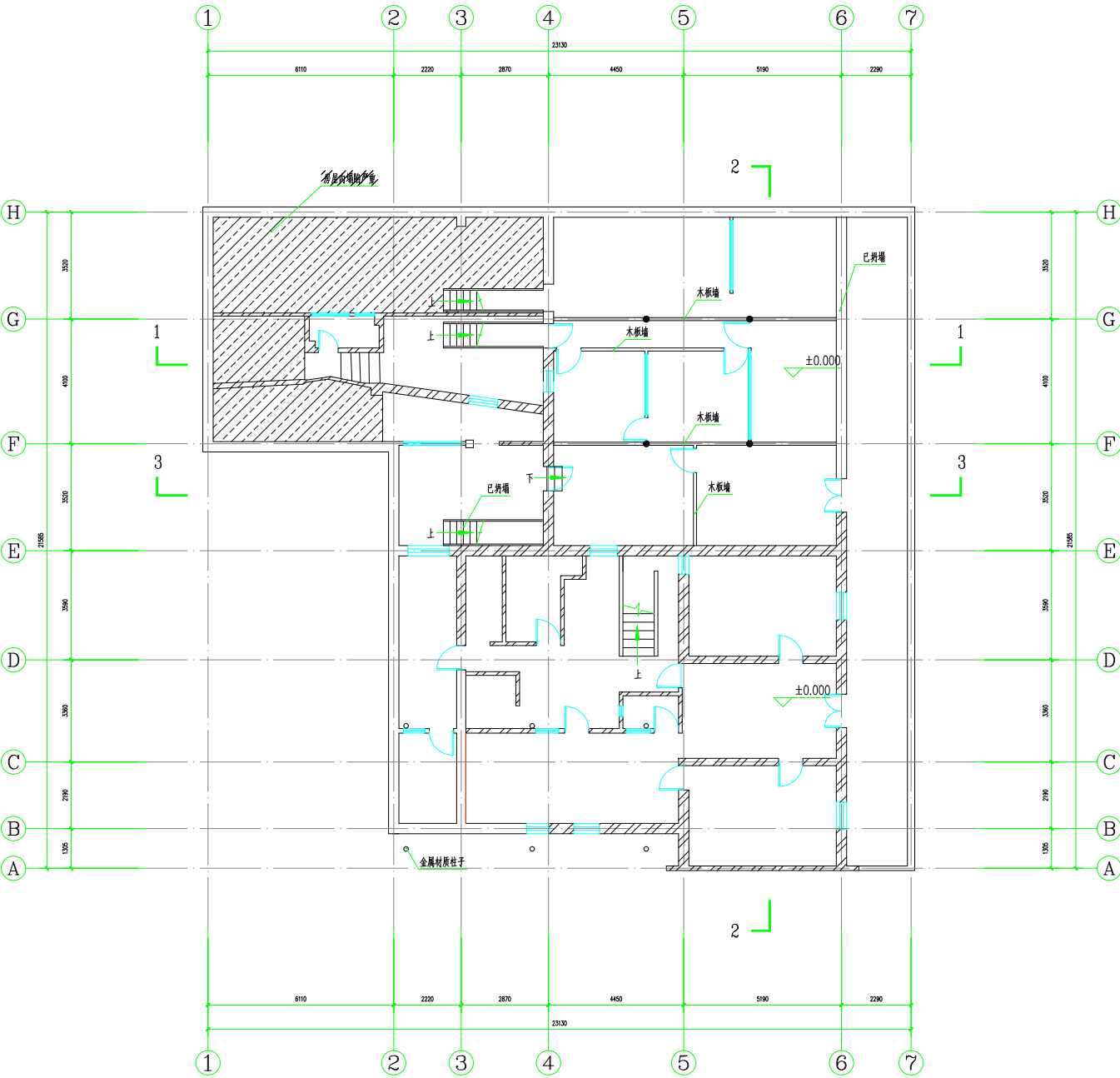
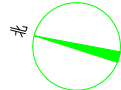


主要经济技术指标

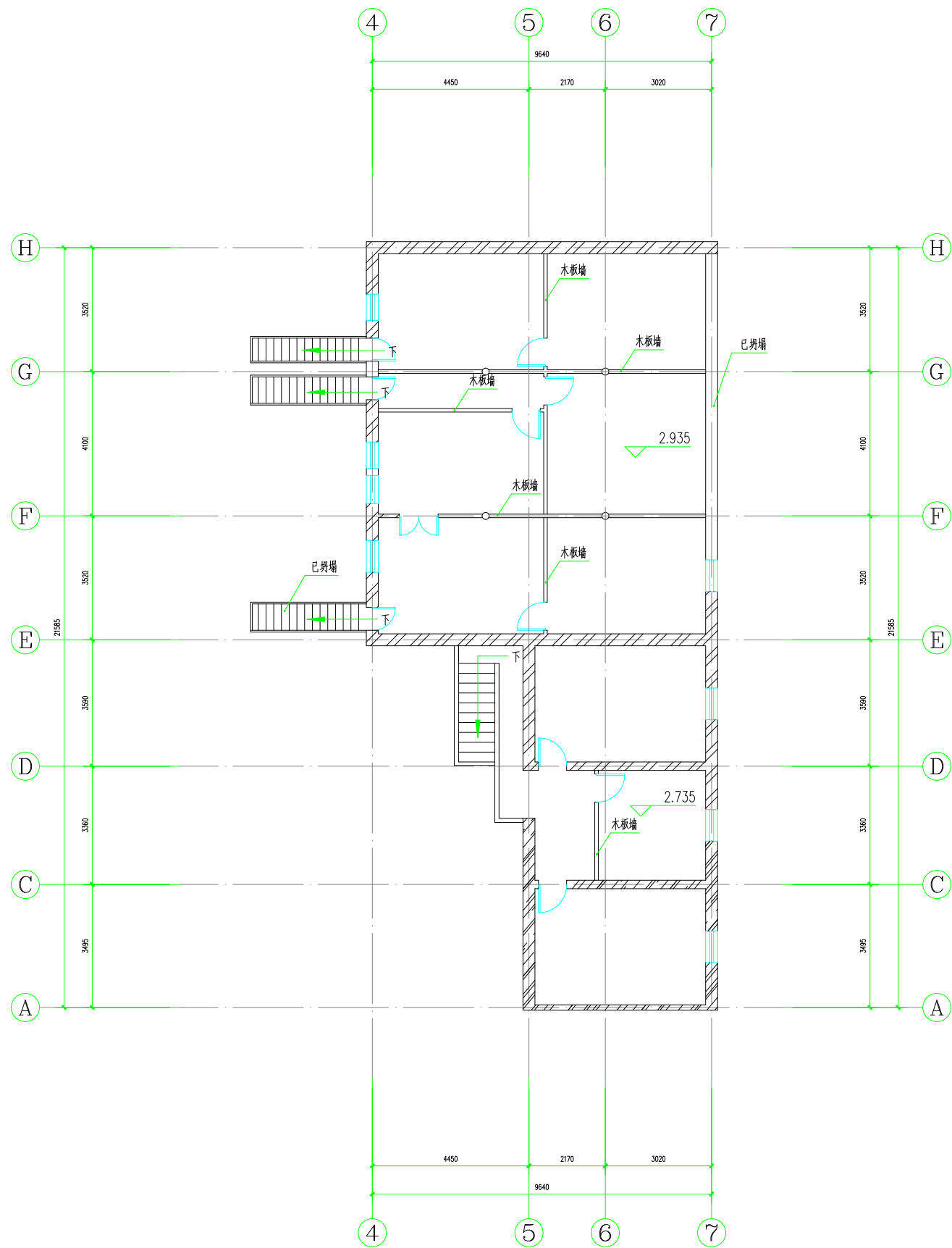
建筑占地面积	379.2m ²
总建筑面积	986.2m ²

-  现存建筑
-  保护范围
-  出入口

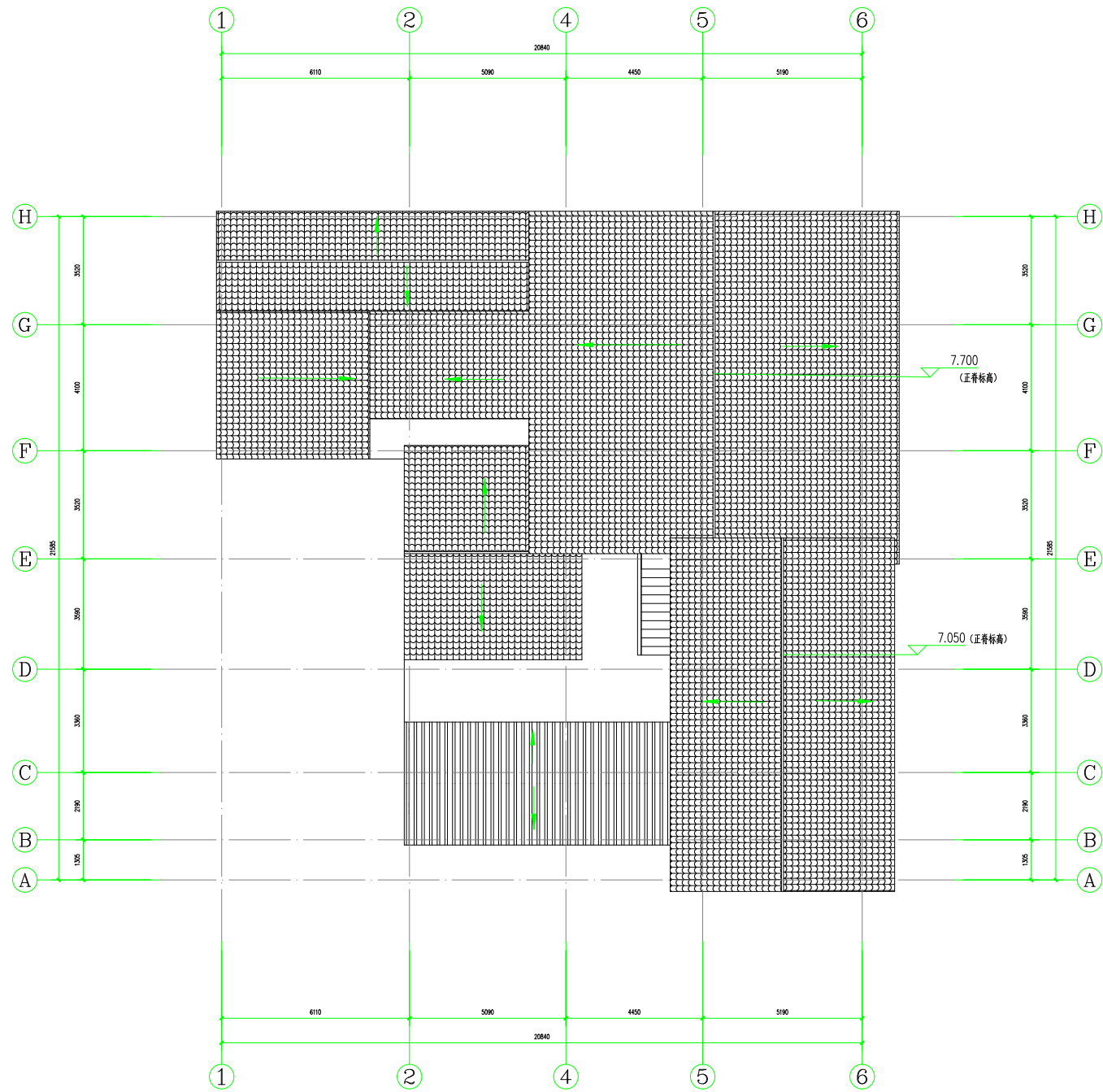
总平面图 1:300



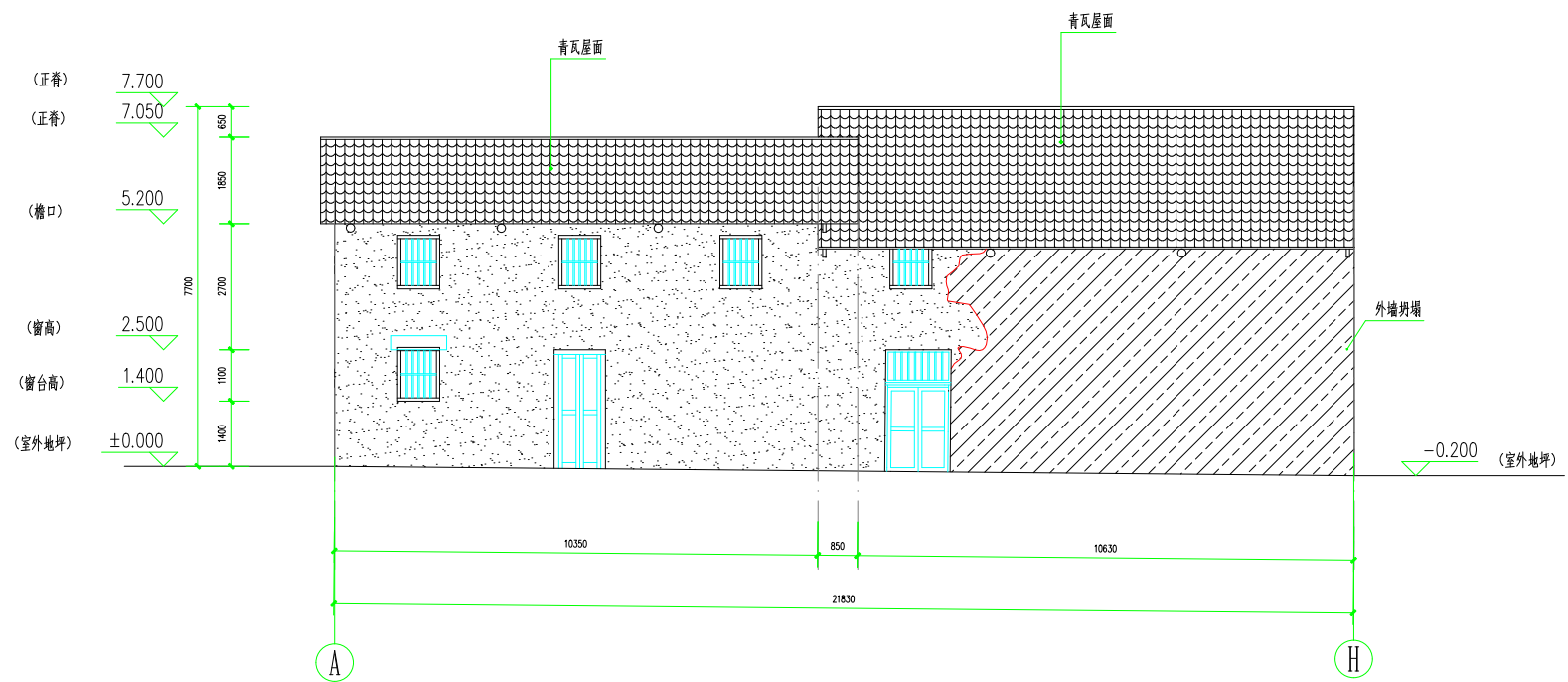
一层平面图 1:150



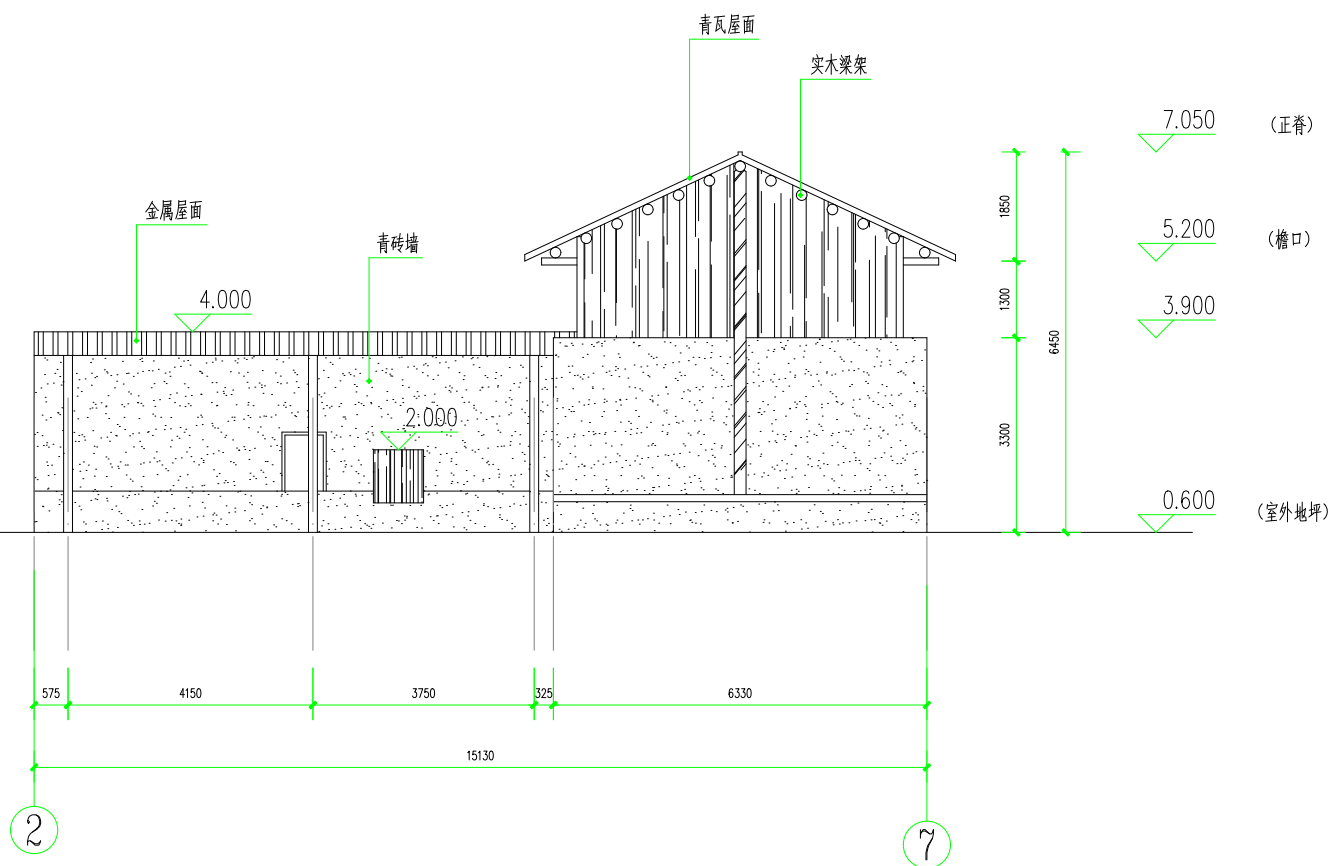
二层平面图 1:150



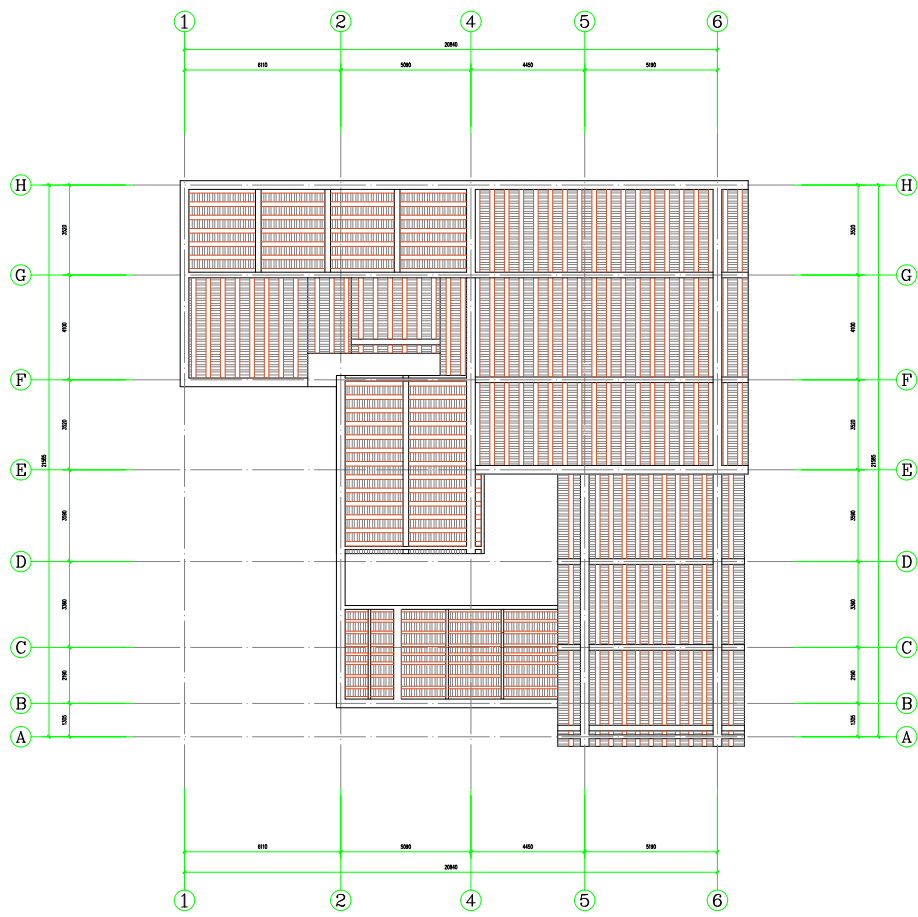
屋顶平面图 1:150



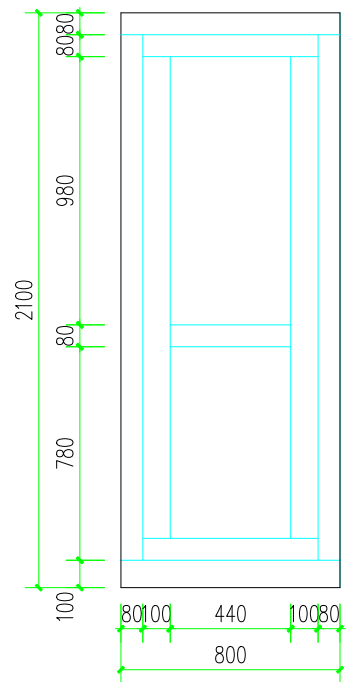
A-H轴立面图 1:100



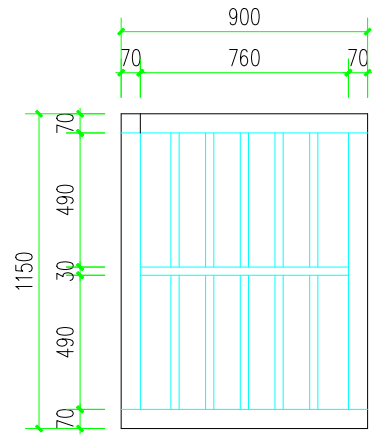
2-7轴立面图 1:100



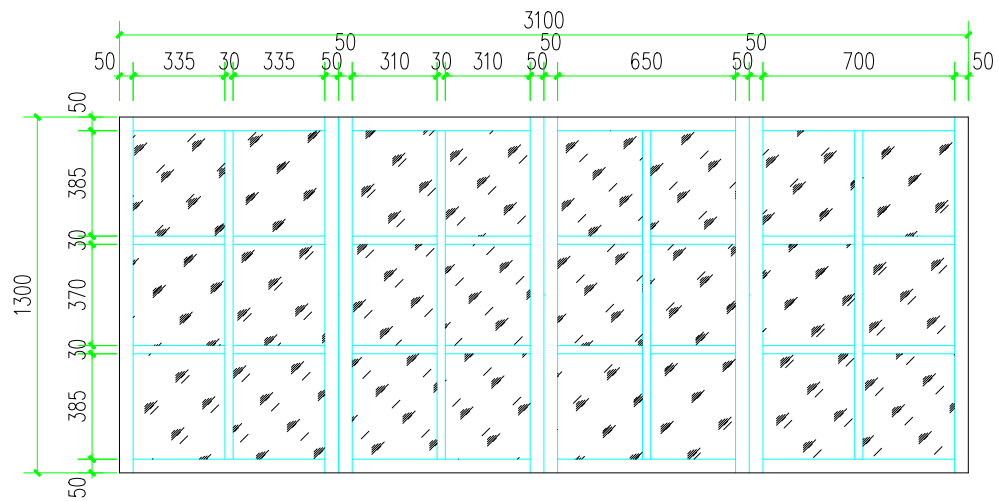
梁架俯视图 1:150



门窗大样图 (1) 1:20



门窗大样图 (2) 1:20



门窗大样图 (3) 1:20